

bristorm Arrestor

Bristorm Arrestor is a free standing demountable anti-vehicle fence that can be used for both temporary and permanent installations.

Developed in collaboration with Corus Bi-Steel, and utilising the Bi-Steel heavy Barge as a distributed anchor system, the Bristorm Arrestor is a further evolution of the Bristorm wire rope technology.

Initially intended to act as a rapidly deployable temporary barrier, the Arrestor system can be deployed onto most surfaces either as a new perimeter or as an enhancement to existing fence lines. The 'no dig' feature means that large temporary installations can be completed within hours of arrival at site.

Tested at TRL to BSI PAS 68, Bristorm Arrestor has proven itself to be capable of stopping a perpendicular ramming attack by a vehicle.

The Arrestor system comprises anchor clusters of 3 barges with further intermediate support barges every 10 metres along the length of the fence. Freestanding line posts are positioned every 5 metres to support the wire ropes and ensure proper rope spacing.

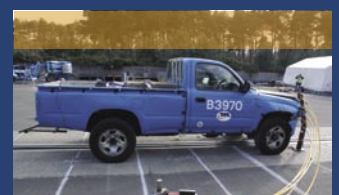
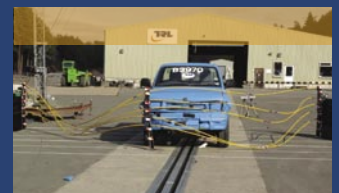
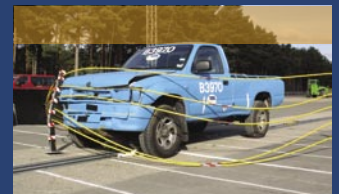
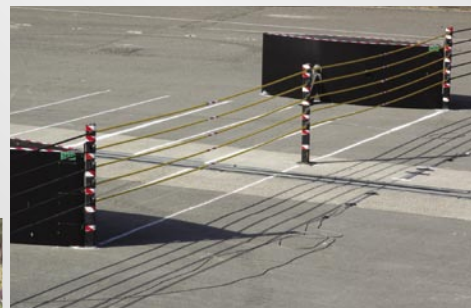
All fence components including the wire ropes are fully galvanised for protection, allowing for use throughout the year.

SPECIFICATION

- Bristorm Arrestor tested to BSI PAS 68
- Vehicle impact at 90° to fence line
- Bristorm Arrestor withstands attack by 2500kg 4x4 travelling at 30mph (48km/h)

THE BENEFITS

- Temporary anti-vehicle barrier
- Rapid deployment
- No foundation requirements
- Installation onto most surfaces
- Good line of sight through open structure
- Flexible integrated application with other Corus Bi-Steel products such as pedestrian portals and BSI PAS 68 lifting arm barriers
- Install alongside temporary or permanent anti-personnel fence
- Minimal maintenance once deployed



Hill & Smith Ltd
 Springvale Business & Industrial Park
 Bilston, Wolverhampton WV14 0QL
 United Kingdom
 T: +44 (0)1902 499400
 F: +44 (0)1902 499419
 E: info@bristorm.com

www.bristorm.com

bristorm Arrestor

DESIGN SPECIFICATION

As with all Bristorm fences, the Arrestor deflects during an impact, absorbing the energy of the moving vehicle. In a traditional fixed fence line, the wire ropes transfer the impact energy to the foundation anchors, stopping the attacking vehicle. Bristorm Arrestor relies on the mass of the Bi-Steel Heavy Barge to absorb the impact energy.

The end anchor cluster and the intermediate barges are intended to move during the deceleration of the attacking vehicle. The amount of movement will depend on a number of factors such as:

- Length of fence
- Speed and mass of impacting vehicle
- Angle that vehicle impacts relative to fence line

Typically a 100 metre installation will deflect by up to 5 metres at the impact point.

Unlike other Bristorm fences, the Arrestor employs untensioned wire ropes.

Bristorm Arrestor can be installed along slight curves and across uneven ground. Care should be taken when installing in a convex pattern (i.e. when the Bristorm Arrestor fence line projects out towards a potential attack). In this configuration the rope may become slack after an impact, allowing subsequent encroachment. Consider whether additional barges can be added to make a more robust perimeter.

When Bristorm Arrestor is applied to sloping ground, care must be taken to ensure that

the barges are not unstable and will not tip over as a result of impact. Where a sudden change in gradient occurs it is advisable to install additional barges or anchors to manage the deflection.

Barge anchor clusters should be deployed between 20 and 100 metres apart. An anchor cluster can act as a termination point for 2 fence lines, and is often deployed at a corner or at a significant change in gradient. The individual support barges are deployed every 10 metres and are fitted with support feet to increase stability during impact. Free standing line posts are positioned every 5 metres to reduce the sag on the wire ropes and ensure the ropes are appropriately spaced.

Where a more permanent installation is envisaged, the free standing line posts can be fixed to the ground using studs or earth anchors through the predrilled holes in the base plate.

If the Arrestor fence is going to be left in position for more than 4 weeks, then it is recommended that the ropes are checked and tightened after 4 weeks to remove any slack that may have appeared. Ongoing quarterly visual inspection of the ropes is also recommended.

It should be noted that Bristorm Arrestor is not a highway safety barrier. Where an installation is intended to go alongside a public highway, it is recommended that an appropriate temporary highway barrier such as Varioguard from Asset International is used.

FENCE SYSTEM

Bristorm Arrestor

DISTANCE BETWEEN ANCHOR CLUSTERS

Maximum 100m

Minimum 10m

ANCHOR CLUSTER SIZE

(a) Length 2700mm

(b) Breadth 2980mm

(c) Depth 900mm

ANCHOR & LINE POST HEIGHT

(d) 1205mm

INTERMEDIATE BARGE SPACING

(e) 10m

FREE STANDING LINE POST SPACING

(f) Diameter 5m (mid distance between barges)

BARGE SUPPORT WIDTH

(g) 1615mm

No OF ROPES

5

ROPE HEIGHT

(h) Top Rope 1120mm

(i) Bottom Rope 450mm

BRISTORM BSI PAS 68 TESTING

Bristorm fences have been successfully tested to BSI PAS 68 and achieved the following classifications:

Bristorm Arrestor

Fence V / 2500 / 48 / 90 : 3.7 / 0.0

