

bristorm LP

Bristorm LP has been developed to protect the longest perimeters from attack by 4 x 4 vehicles. Even more economical than the Bristorm Fence, Bristorm LP is intended to protect the extended perimeters of large sites such as airports, power stations and military installations.

Tested at MIRA to BSI PAS 68, Bristorm LP can withstand ramming attack by a 2500kg 4 x 4 vehicle travelling at speeds of up to 40 mph and at 90° to the fence line.

Bristorm LP provides protection against small fast vehicles crossing uneven ground (fields, unmade service roads etc) and attacking "secure" perimeter fences away from the normal road vehicle access points.

The unique features that make the Bristorm Fence so desirable are improved upon in Bristorm LP. Open structure allowing unrestricted line of sight, incredibly efficient wire rope technology, increased line post spacing and new reduced cost ground anchors all contribute to make Bristorm LP the best choice for Long Perimeters.

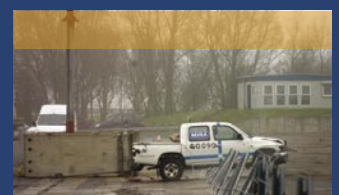
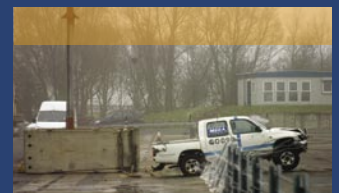
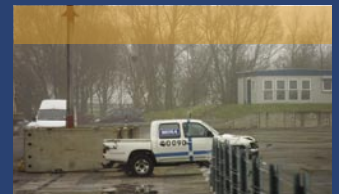
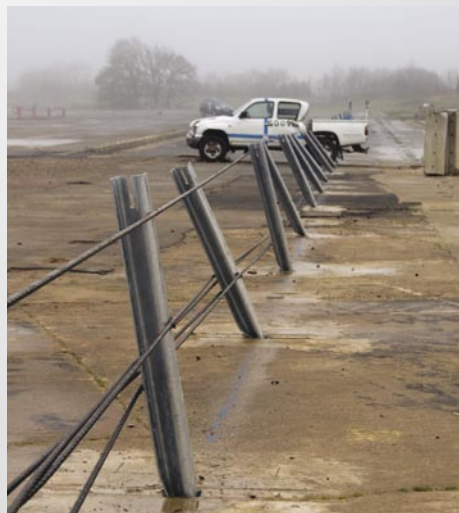
Full height anchor post are also available when the fence must start or end at full height.

SPECIFICATION

- Bristorm LP tested to BSI PAS 68
- Vehicles impact at 90° to fence line
- Bristorm LP withstands attack by 2500 kg 4 x 4 travelling at 40 mph (64 km/h)

THE BENEFITS

- Even more economical than Bristorm 30
- Optimised to defend against the threat presented by 4 x 4 vehicles
- Unique vehicle capture feature
- Fast to install and easy to handle components
- Minimal maintenance
- Ground anchor option for reduced costs
- Uninterrupted line of sight through open structure



bristorm 

Hill & Smith Ltd
 Springvale Business & Industrial Park
 Bilston, Wolverhampton WV14 0QL
 United Kingdom
 T: +44 (0)1902 499400
 F: +44 (0)1902 499419
 E: info@bristorm.com

www.bristorm.com

DESIGN SPECIFICATION

During the initial phase of an impact, the Bristorm LP fence deflects and absorbs energy. Final deceleration and stopping of the attacking vehicle is both rapid and destructive. Where the impact has not immobilised the vehicle, the top rope on the Bristorm LP fence will pass up over the top of the vehicle, smashing the windscreen and capturing the vehicle within the fence itself.

The amount of deflection that will occur during an impact is dependent on a number of factors e.g.

- Distance between anchors
- Speed of impacting vehicle
- Angle that vehicle impacts relative to fence line

When designing a scheme it is advisable to consider the deflection of the Bristorm LP system and ensure that nothing vital is contained within the deflection Zone. Typical deflection of a Bristorm LP less than 4 metres with anchors 100m apart. Deflection is largely irrelevant for long perimeters where critical assets are hundreds of metres away. Contact Bristorm to determine the likely deflection for a specific installation, and for possible options for limiting the depth of deflection in vital areas.

Bristorm LP fence must be installed in straight lengths with 20m to 200m between anchors. An anchor post must be installed wherever there is a change in direction or slope. A number of main anchor designs are available that can interface directly with the Bristorm Fence system (e.g. Bristorm 30), or allow a fence to finish at full height rather than a ground anchor. Please contact Bristorm for assistance with scheme design and anchor selection. For straight line installations in excess of 200 m a series of intermediate anchors can be used to terminate groups of ropes. This ensures that in the event of an attack only a small section of the full perimeter is damaged.

Concrete grade C50 should be used in all Bristorm Fence foundations. The foundations are discrete and evenly spaced along the perimeter. This allows underground services to easily pass through the Bristorm LP fence and can be combined with anti personnel fences and surveillance/monitoring systems to provide an enhanced perimeter.

BRISTORM BSI PAS 68 TESTING

Bristorm fences have been successfully tested to BSI PAS 68 and achieved the following classification:

Bristorm LP
Fence V / 2500 / 64 / 90 : 4.5 / 0.0

FENCE SYSTEM

Bristorm LP

DISTANCE BETWEEN ANCHORS

Maximum 200m
Minimum 20m

ANCHOR FOUNDATION SIZE

(a) Length 3m
(b) Breadth 1.5m
(c) Depth 1.25m

ANCHOR POST HEIGHT

(d) N/A

LINE POST SPACING

(e) Maximum 4000mm
(e) Minimum 1600mm

LINE POST FOUNDATION SIZE

(f) Diameter 500mm
(g) Depth 950mm

LINE POST HEIGHT

(h) 1230mm

LINE POST TILT

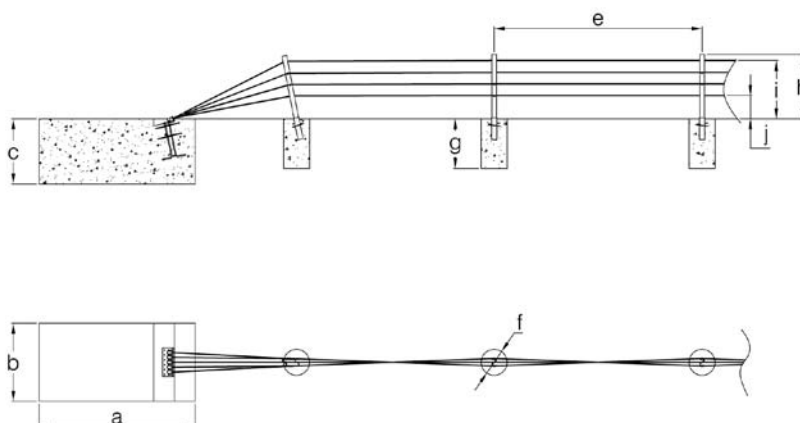
N/A

No OF ROPES

5

ROPE HEIGHT

(i) Top Rope 1120mm
(i) Base Rope 450mm



bristorm 

Hill & Smith Ltd

Springvale Business & Industrial Park
Bilston, Wolverhampton WV14 0QL
United Kingdom

T: +44 (0)1902 499400

F: +44 (0)1902 499419

E: info@bristorm.com

www.bristorm.com